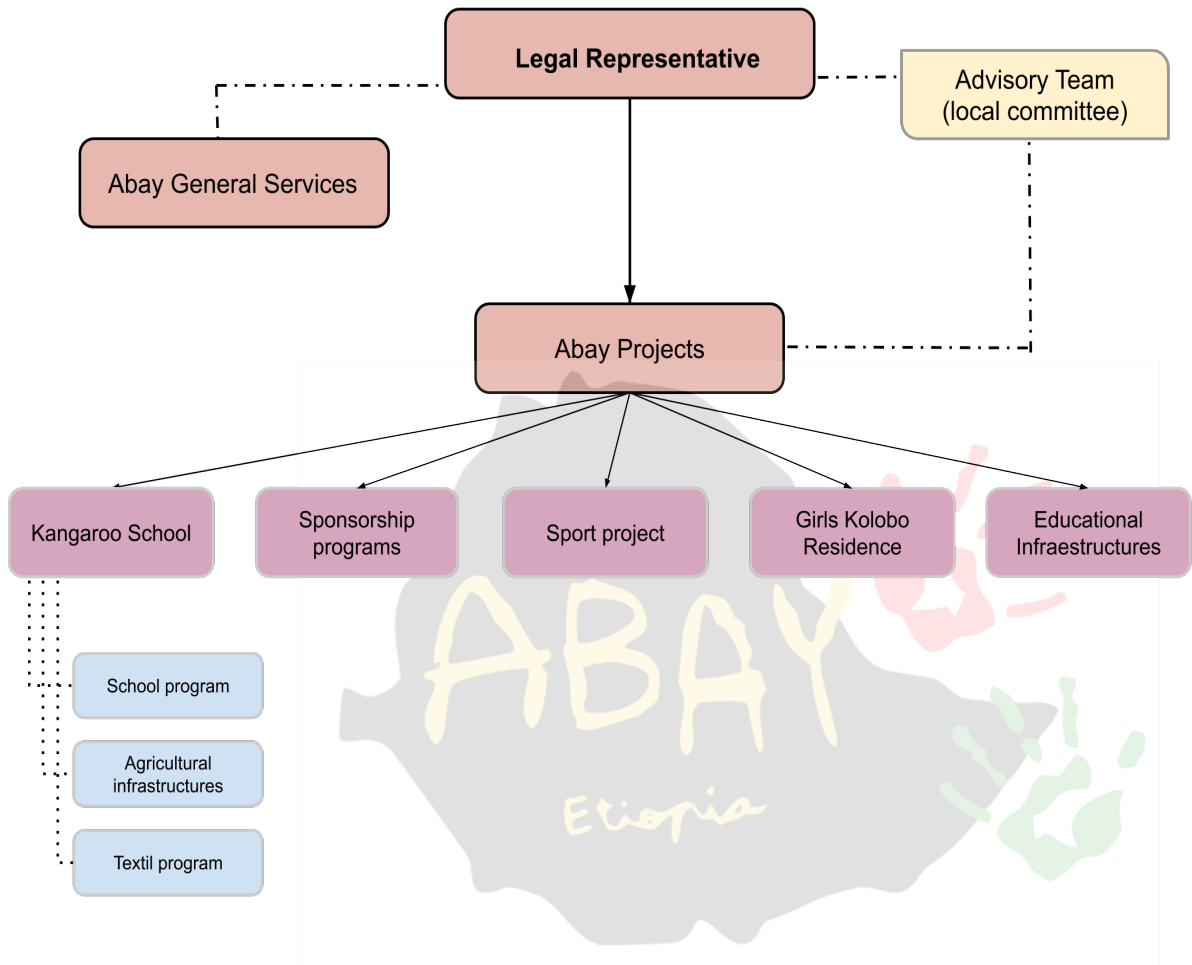


# ABAY ORGANIZATIONAL STRUCTURE



1	<b>Boja Abera</b>	<b>Legal Representative</b>
2	Mesganaw Getachew	<b>Project Officer</b>
3	Eyerusalem Melese	<b>Accountant</b>
4	Adugna Megersa	<b>Accountant assistant</b>
5	Mulushewa Shalmeno	<b>Textil Teacher</b>
6	Bedada Dame	<b>Health Extension Helper</b>
7	Mulugueta Ayene	<b>Social Worker</b>
8	Chaltu Gosu	<b>Sport teacher</b>
9	Alemayehu Negasa	<b>Sport teacher assisstant</b>
10	Maya Wondwosen	<b>Special Need teacher</b>
11	Askale Adugna	<b>Kangaroo teacher</b>
12	Roman Ayana	<b>Kangaroo teacher</b>
13	Ayetu Firomsa	<b>Kangaroo teacher</b>
14	Meri Negasa	<b>Kangaroo teacher</b>
15	Elifu Erpa	<b>Kangaroo assistant</b>
16	Shayitu	<b>Kangaroo assistant</b>
17	Kesho	<b>Kangaroo assistant</b>
18	Aberash	<b>Kangaroo assistant</b>
19	Shewaye	<b>Kangaroo assistant</b>
20	Sorse	<b>Kangaroo assistant</b>
21	Demitu	<b>Kangaroo assistant</b>
22	Aster	<b>Kangaroo assistant</b>
23	Yeshi Tesfaye	<b>Kangaroo assistant</b>
24	Ielise Ketema	<b>Kangaroo assistant</b>
25	Tatu Endale	<b>Kangaroo assistant</b>
26	Shasho Sori	<b>Kangaroo assistant</b>
27	Wede Dugma	<b>Kangaroo assistant</b>
28	Lelise Dejene	<b>Kangaroo assistant</b>
29	Warkitu Kabada	<b>Kangaroo assistant</b>
30	Keneni Guta	<b>Kangaroo assistant</b>
31	Dasi Tonkolu	<b>Kangaroo assistant</b>
32	Bedada Tadese	<b>Kangaroo assistant</b>
33	Yigezu Chala	<b>Kangaroo assistant</b>
34	Gelane Eshetu	<b>Kangaroo assistant</b>
35	Gadise Neshetu	<b>Kangaroo assistant</b>
36	Toleshi Sufa	<b>Kangaroo assistant</b>
37	Ashu Alemu	<b>Kangaroo assistant</b>
38	Alemi Firomsa	<b>Kangaroo assistant</b>
39	Efe Kuma	<b>Kangaroo assistant</b>
40	Gadise Teferi	<b>Kangaroo assistant</b>
41	Dinke Beyene	<b>Kangaroo assistant</b>
42	Gizachow Soresa	<b>Kangaroo assistant</b>